



Pear Tree
DRIVE



Backed by
HM Government

A STYLISH COLLECTION OF 2 & 3
BEDROOM DUPLEX APARTMENTS
AND 2 BEDROOM HOUSES.





A PERFECTLY DESIGNED
FAMILY HOME



WELCOME TO WEMBLEY

Wembley is in the heart of North- West London's vibrant and international neighbour hoods. Pear Tree Dive is set close to a thriving local community and the city is within easy reach. Wembley is of course famous for its Stadium.



EATING & DRINKING

There are a wealth of options for people to go.



SCHOOLS & EDUCATION

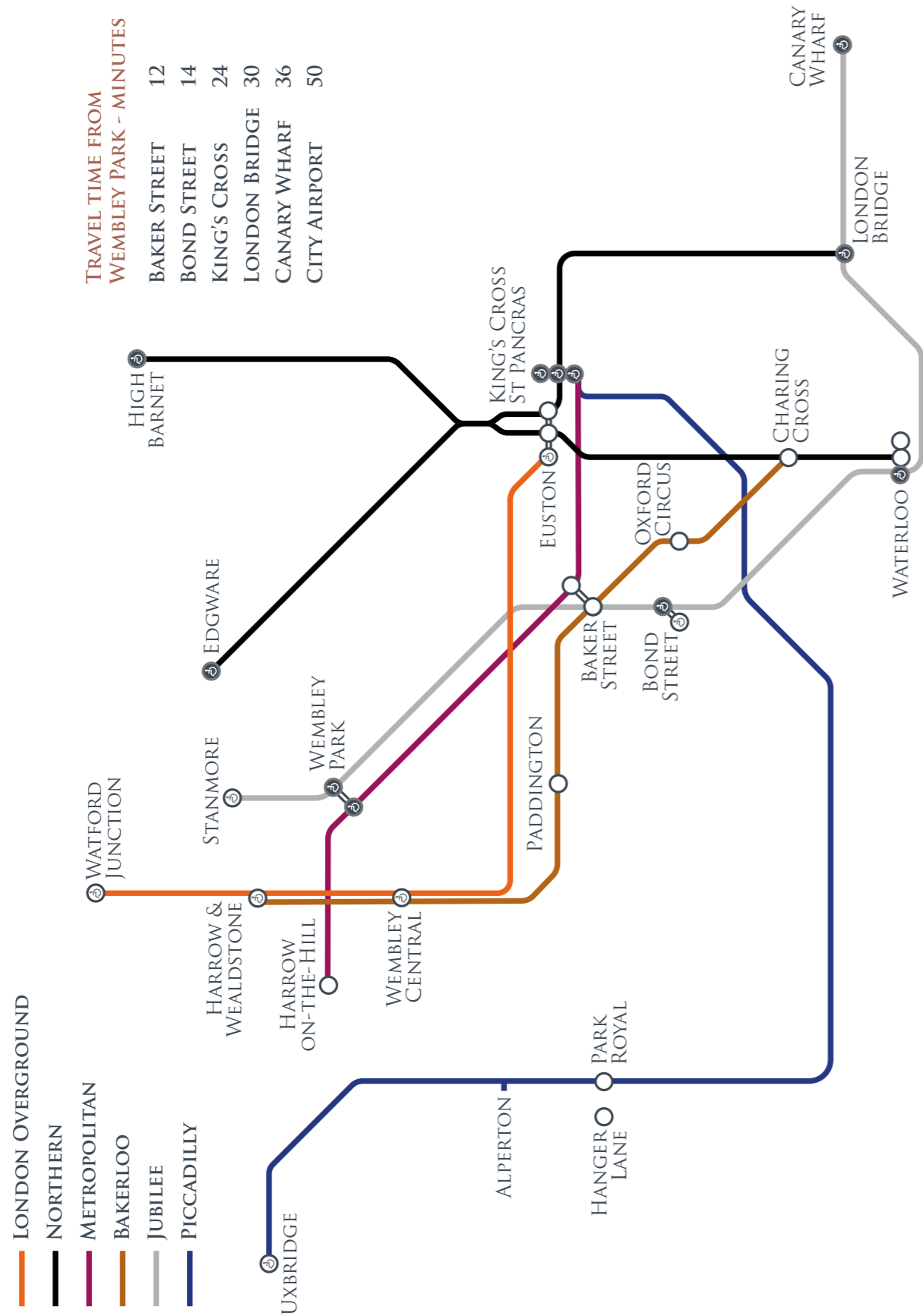
There are plenty of nurseries, primary and secondary schools to six form colleges and universities.

SPORTS & ACTIVITIES

The area offers a wide range of indoor activities. King Edward VII Park is equipped with Tennis Courts and an outside gym. Horsenden and Sudbury golf clubs are situated nearby. The Brent reservoir is a popular destination for people from all over London.



MAP



PEAR TREE DRIVE 6 WEMBLEY *Shirton*

GETTING AROUND

Alpertton & Wembley have excellent transport links to Central London and has direct connections to Kings Cross, Liverpool Street, Paddington, London Bridge and Canary Wharf via Metropolitan and Jubilee Lines.

TRAIN

ALPERTON

Underground Picadilly line to London Victoria 18 minutes
Underground Picadilly line to Uiveristy of London 19 minutes

HANGER LANE

Underground Central line to Marble Arch 22 minutes
Underground Central line to Oxford Circus 23 minutes

WEMBLEY PARK

Baker Street 12 minutes.
Bond Street 14 minutes.
Kings Cross 24 minutes.
London Bridge 30 minutes.
Canary Wharf 36 minutes.
City Airport 50 minutes.

WEMBLEY CENTRAL

Euston 8 minutes.
Paddington 24 minutes.
Oxford Circus 31 minutes.
Charing Cross 35 minutes.
Waterloo 38 minutes.
Heathrow Airport 45 minutes.

WEMBLEY STADIUM

Marylebone 12 minutes.
Heathrow Airport 65 minutes.



SITE PLAN





A SUPERB BALANCE OF BOTH
FORMAL AND RELAXED
LIVING SPACES







THE ULTIMATE IN
LUXURY LIVING



THE ULTIMATE IN
LUXURY LIVING



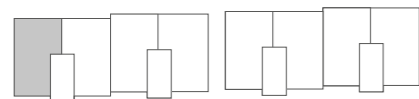
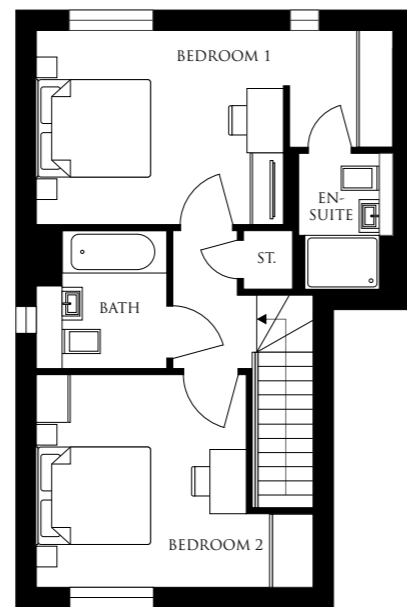
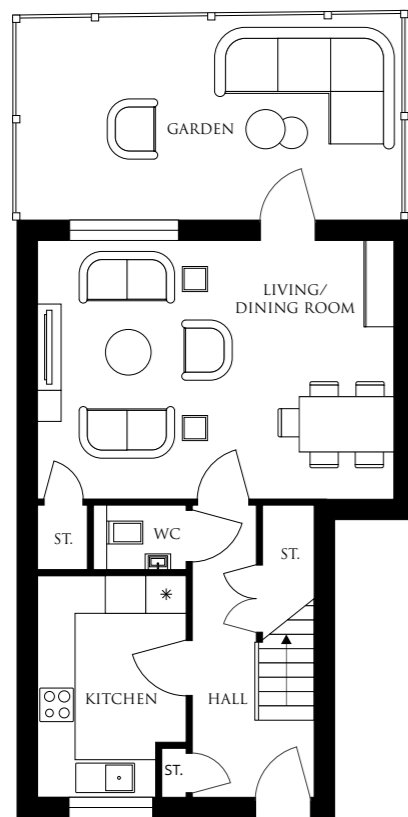
THE ULTIMATE
IN LUXURY LIVING





PLOT ONE, 2 BEDROOM APARTMENT

LIVING/DINING ROOM	5801MM X 4162MM	19'0" X 13'7"
KITCHEN	2409MM X 3629MM	7'10" X 11'10"
BEDROOM 1	5801MM X 3126MM	19'0" X 10'3"
BEDROOM 2	4504MM X 3465MM	14'9" X 11'4"
BATH	2100MM X 2250MM	6'10" X 7'4"

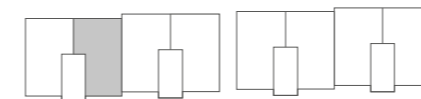
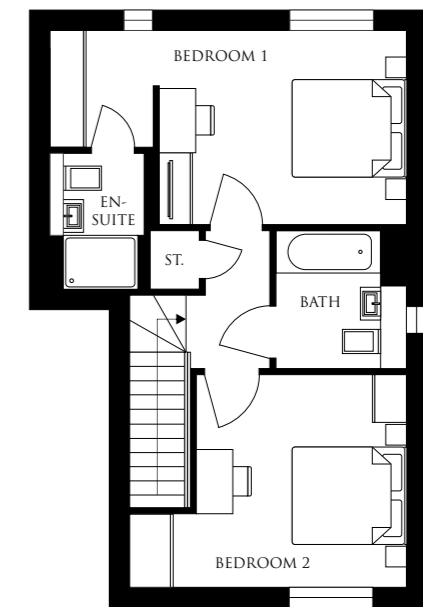
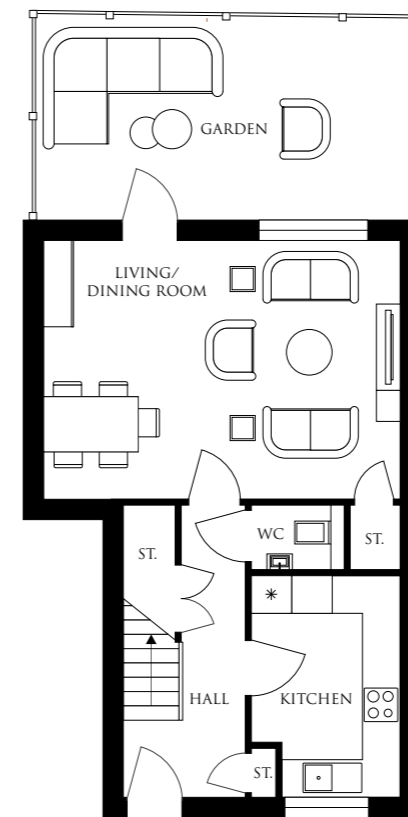


Whilst every attempt has been made to ensure the accuracy of this floor plan, measurements of doors, windows and rooms are approximate and no responsibility is taken for any error or omission. This illustration is for identification purposes only.



PLOT TWO, 2 BEDROOM APARTMENT

LIVING/DINING ROOM	5801MM X 4162MM	19'0" X 13'7"
KITCHEN	2409MM X 3629MM	7'10" X 11'10"
BEDROOM 1	5801MM X 3126MM	19'0" X 10'3"
BEDROOM 2	4504MM X 3465MM	14'9" X 11'4"
BATH	2100MM X 2250MM	6'10" X 7'4"

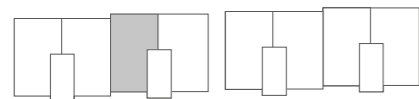
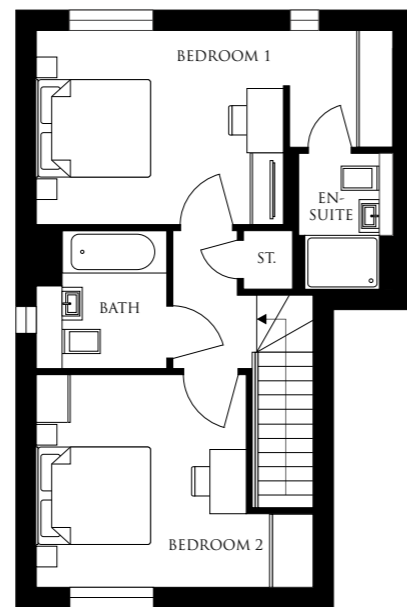
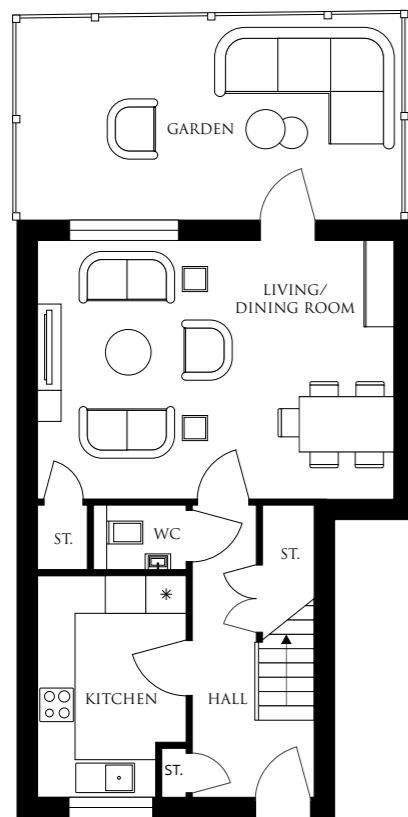


Whilst every attempt has been made to ensure the accuracy of this floor plan, measurements of doors, windows and rooms are approximate and no responsibility is taken for any error or omission. This illustration is for identification purposes only.



PLOT THREE, 2 BEDROOM APARTMENT

LIVING/DINING ROOM	5801MM X 4162MM	19'0" X 13'7"
KITCHEN	2409MM X 3629MM	7'10" X 11'10"
BEDROOM 1	5801MM X 3126MM	19'0" X 10'3"
BEDROOM 2	4504MM X 3465MM	14'9" X 11'4"
BATH	2100MM X 2250MM	6'10" X 7'4"

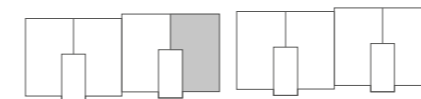
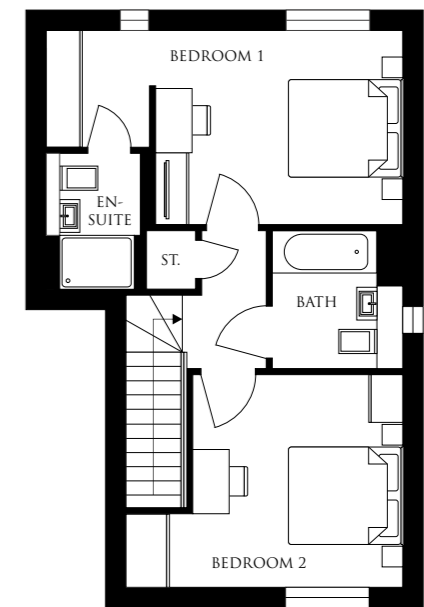
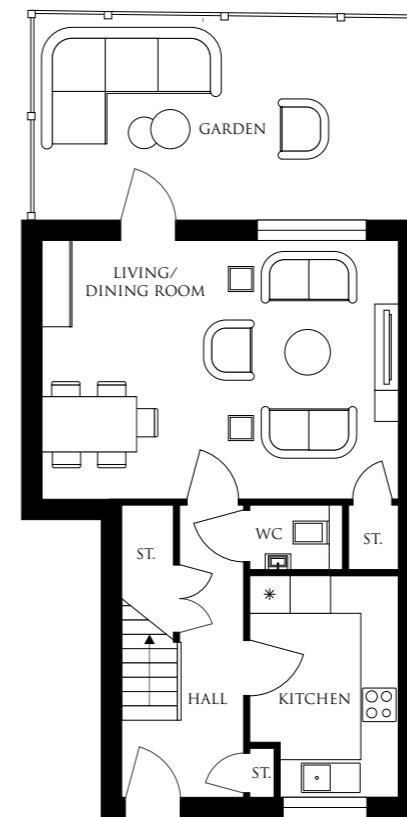


Whilst every attempt has been made to ensure the accuracy of this floor plan, measurements of doors, windows and rooms are approximate and no responsibility is taken for any error or omission. This illustration is for identification purposes only.



PLOT FOUR, 2 BEDROOM APARTMENT

LIVING/DINING ROOM	5801MM X 4162MM	19'0" X 13'7"
KITCHEN	2409MM X 3629MM	7'10" X 11'10"
BEDROOM 1	5801MM X 3126MM	19'0" X 10'3"
BEDROOM 2	4504MM X 3465MM	14'9" X 11'4"
BATH	2100MM X 2250MM	6'10" X 7'4"

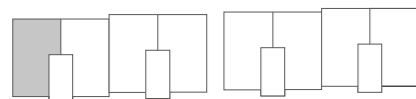
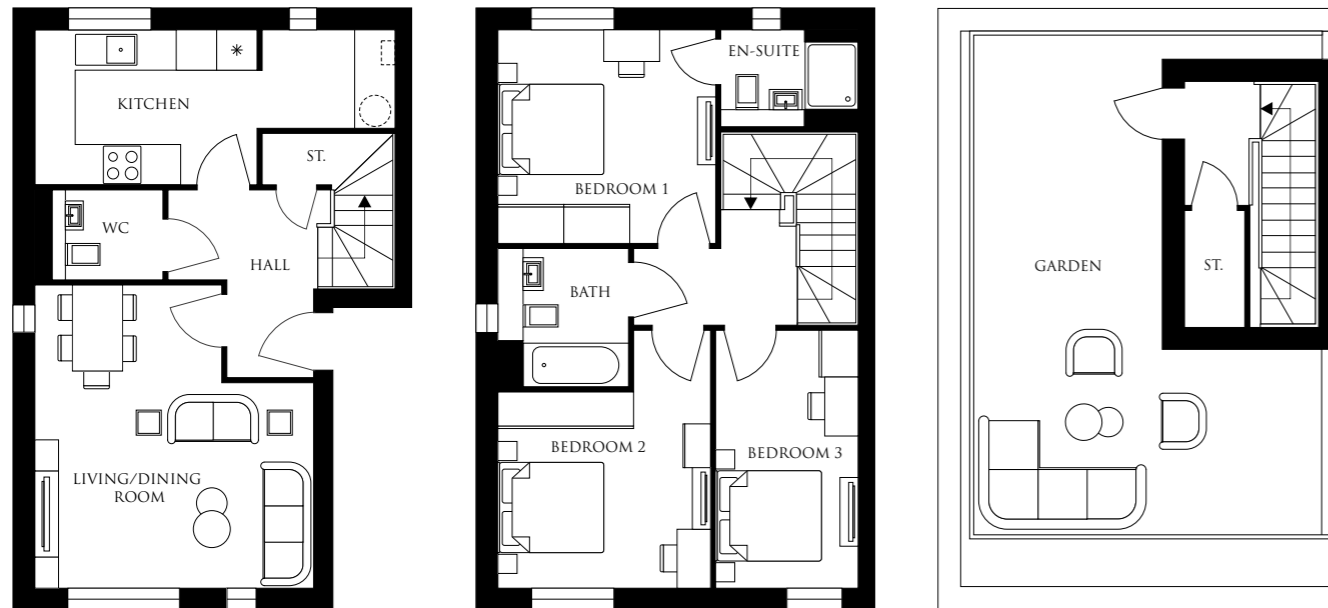


Whilst every attempt has been made to ensure the accuracy of this floor plan, measurements of doors, windows and rooms are approximate and no responsibility is taken for any error or omission. This illustration is for identification purposes only.



PLOT FIVE, 3 BEDROOM APARTMENT

LIVING/DINING ROOM	4504MM X 4900MM	14'7" X 16'0"
KITCHEN	3586MM X 2491MM	11'9" X 8'2"
BEDROOM 1	3518MM X 3446MM	11'6" X 11'3"
BEDROOM 2	3428MM X 3145MM	11'2" X 10'3"
BEDROOM 3	2290MM X 4142MM	7'6" X 13'7"
BATH	2100MM X 2250MM	6'10" X 7'4"
EN-SUITE	2200MM X 1570MM	7'2" X 5'1"

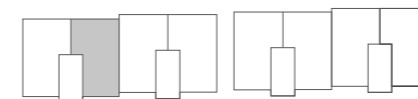
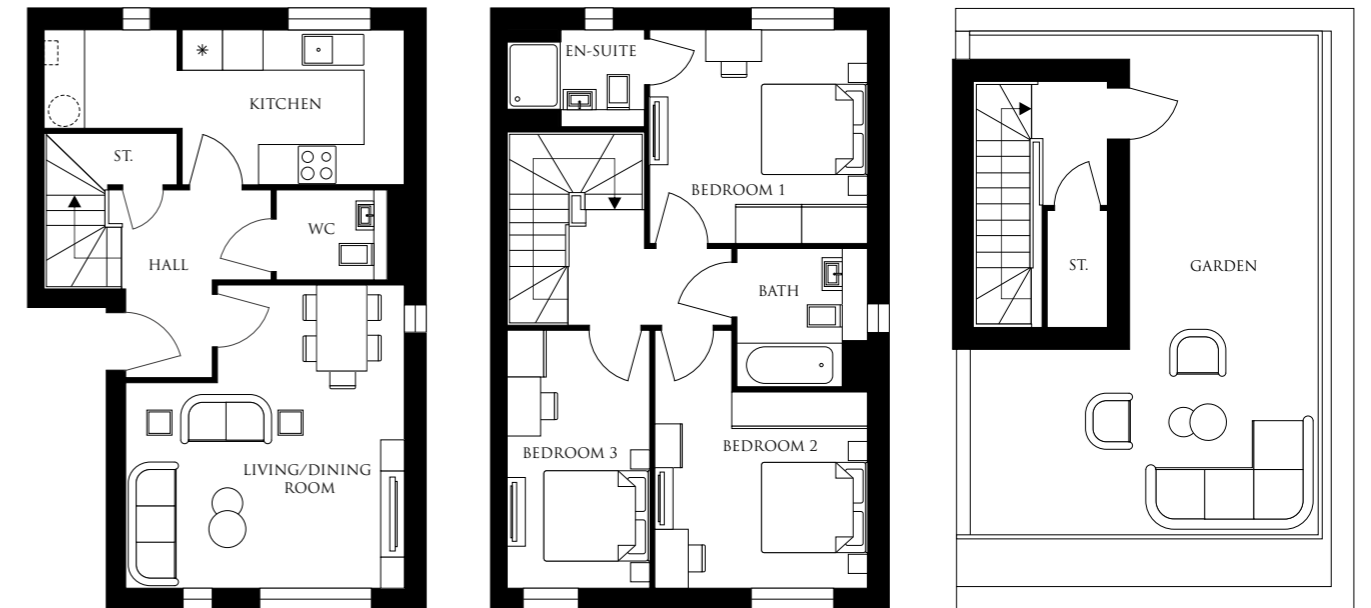


Whilst every attempt has been made to ensure the accuracy of this floor plan, measurements of doors, windows and rooms are approximate and no responsibility is taken for any error or omission. This illustration is for identification purposes only.



PLOT SIX, 3 BEDROOM APARTMENT

LIVING/DINING ROOM	4504MM X 4900MM	14'7" X 16'0"
KITCHEN	3586MM X 2491MM	11'9" X 8'2"
BEDROOM 1	3518MM X 3446MM	11'6" X 11'3"
BEDROOM 2	3428MM X 3145MM	11'2" X 10'3"
BEDROOM 3	2290MM X 4142MM	7'6" X 13'7"
BATH	2100MM X 2250MM	6'10" X 7'4"
EN-SUITE	2200MM X 1570MM	7'2" X 5'1"

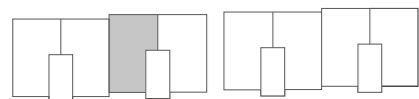
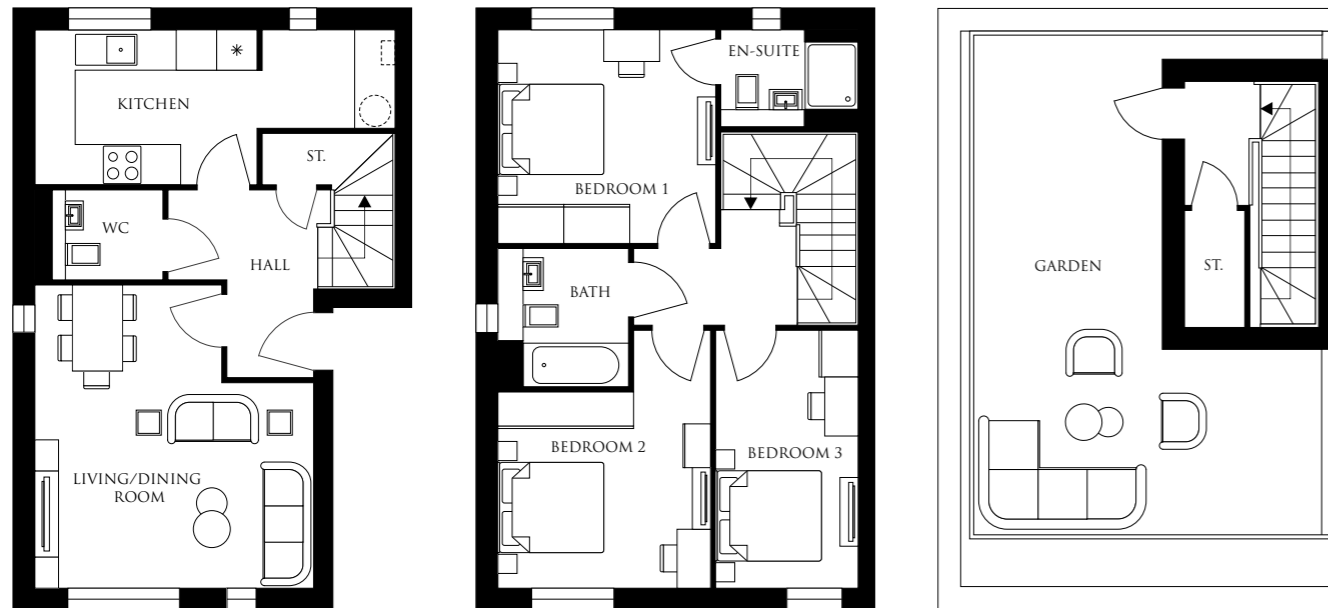


Whilst every attempt has been made to ensure the accuracy of this floor plan, measurements of doors, windows and rooms are approximate and no responsibility is taken for any error or omission. This illustration is for identification purposes only.



PLOT SEVEN, 3 BEDROOM APARTMENT

LIVING/DINING ROOM	4504MM X 4900MM	14'7" X 16'0"
KITCHEN	3586MM X 2491MM	11'9" X 8'2"
BEDROOM 1	3518MM X 3446MM	11'6" X 11'3"
BEDROOM 2	3428MM X 3145MM	11'2" X 10'3"
BEDROOM 3	2290MM X 4142MM	7'6" X 13'7"
BATH	2100MM X 2250MM	6'10" X 7'4"
EN-SUITE	2200MM X 1570MM	7'2" X 5'1"

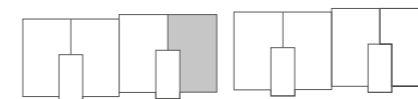
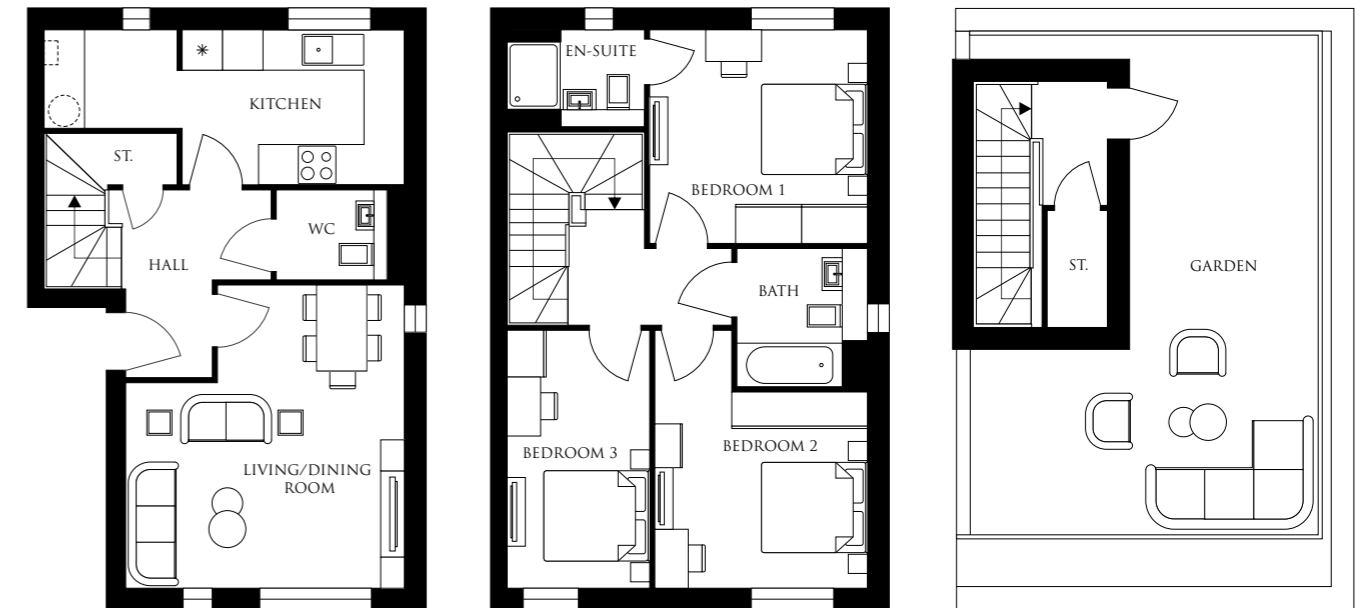


Whilst every attempt has been made to ensure the accuracy of this floor plan, measurements of doors, windows and rooms are approximate and no responsibility is taken for any error or omission. This illustration is for identification purposes only.



PLOT EIGHT, 3 BEDROOM APARTMENT

LIVING/DINING ROOM	4504MM X 4900MM	14'7" X 16'0"
KITCHEN	3586MM X 2491MM	11'9" X 8'2"
BEDROOM 1	3518MM X 3446MM	11'6" X 11'3"
BEDROOM 2	3428MM X 3145MM	11'2" X 10'3"
BEDROOM 3	2290MM X 4142MM	7'6" X 13'7"
BATH	2100MM X 2250MM	6'10" X 7'4"
EN-SUITE	2200MM X 1570MM	7'2" X 5'1"

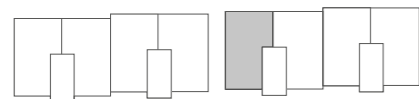
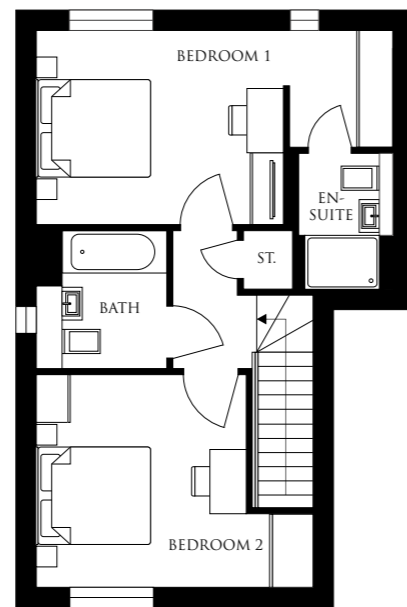
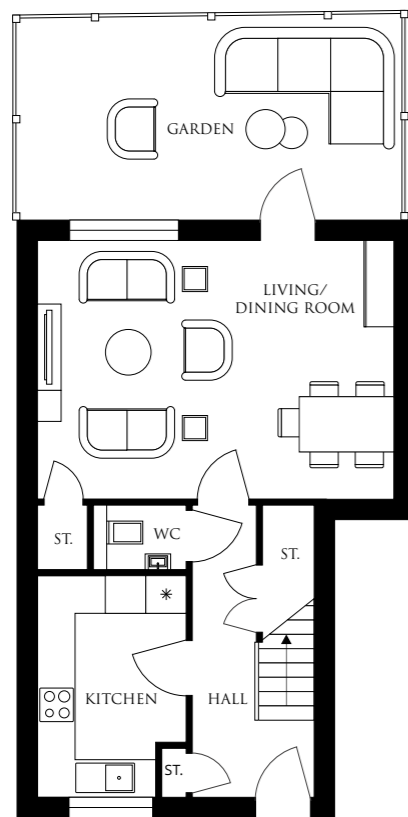


Whilst every attempt has been made to ensure the accuracy of this floor plan, measurements of doors, windows and rooms are approximate and no responsibility is taken for any error or omission. This illustration is for identification purposes only.



PLOT NINE, 2 BEDROOM APARTMENT

LIVING/DINING ROOM	5801MM X 4162MM	19'0" X 13'7"
KITCHEN	2409MM X 3629MM	7'10" X 11'10"
BEDROOM 1	5801MM X 3126MM	19'0" X 10'3"
BEDROOM 2	4504MM X 3465MM	14'9" X 11'4"
BATH	2100MM X 2250MM	6'10" X 7'4"

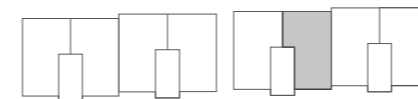
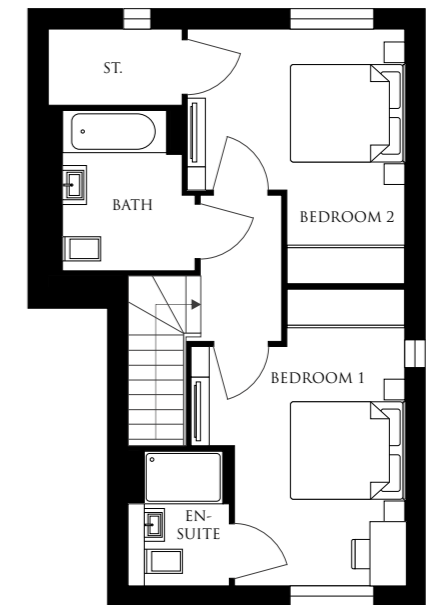
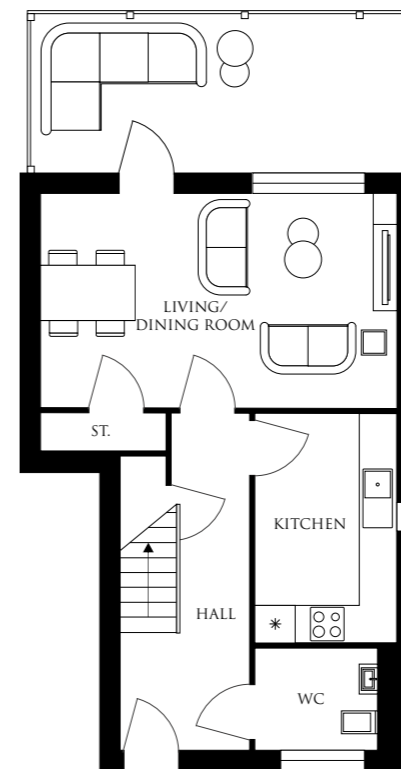


Whilst every attempt has been made to ensure the accuracy of this floor plan, measurements of doors, windows and rooms are approximate and no responsibility is taken for any error or omission. This illustration is for identification purposes only.



PLOT TEN, 2 BEDROOM APARTMENT

LIVING/DINING ROOM	5813MM X 3467MM	19'0" X 11'4"
KITCHEN	2300MM X 3724MM	7'6" X 12'2"
BEDROOM 1	3459MM X 4215MM	11'4" X 13'9"
BEDROOM 2	3518MM X 4097MM	11'6" X 13'5"
BATH	1950MM X 2600MM	6'4" X 8'6"
EN-SUITE	1650MM X 2200MM	5'4" X 7'2"

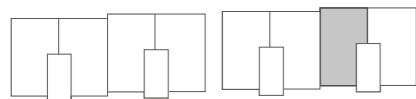
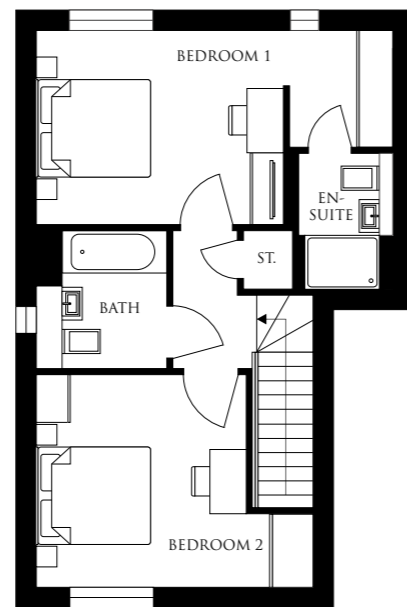
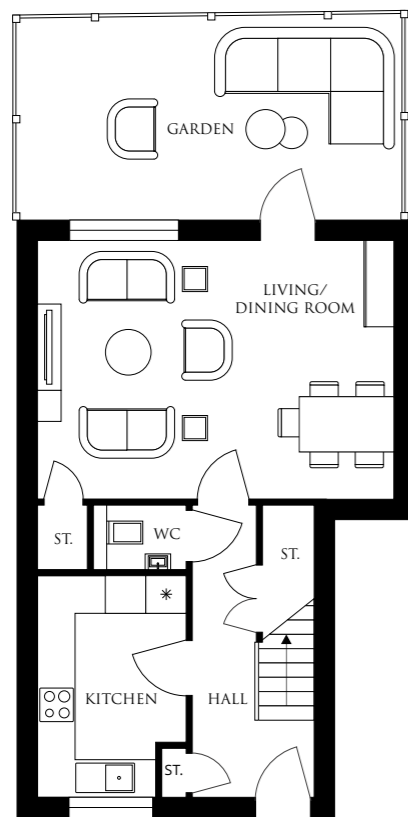


Whilst every attempt has been made to ensure the accuracy of this floor plan, measurements of doors, windows and rooms are approximate and no responsibility is taken for any error or omission. This illustration is for identification purposes only.



PLOT ELEVEN, 2 BEDROOM APARTMENT

LIVING/DINING ROOM	5801MM X 4162MM	19'0" X 13'7"
KITCHEN	2409MM X 3629MM	7'10" X 11'10"
BEDROOM 1	5801MM X 3126MM	19'0" X 10'3"
BEDROOM 2	4504MM X 3465MM	14'9" X 11'4"
BATH	2100MM X 2250MM	6'10" X 7'4"

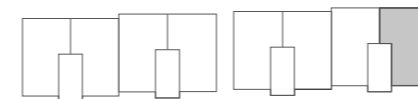
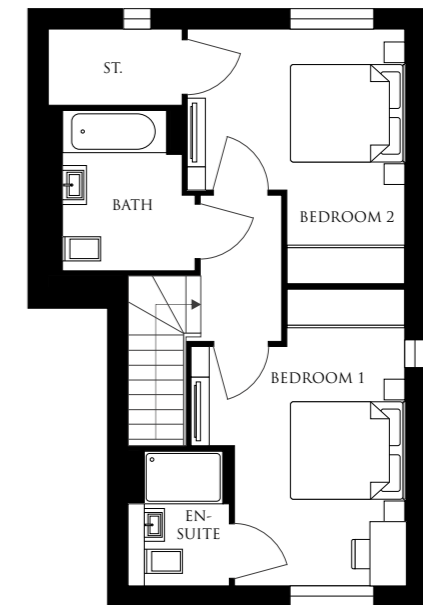
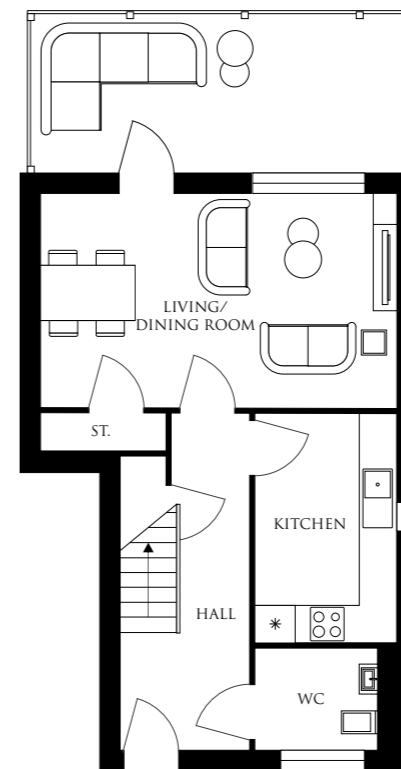


Whilst every attempt has been made to ensure the accuracy of this floor plan, measurements of doors, windows and rooms are approximate and no responsibility is taken for any error or omission. This illustration is for identification purposes only.



PLOT TWELVE, 2 BEDROOM APARTMENT

LIVING/DINING ROOM	5813MM X 3467MM	19'0" X 11'4"
KITCHEN	2300MM X 3724MM	7'6" X 12'2"
BEDROOM 1	3459MM X 4215MM	11'4" X 13'9"
BEDROOM 2	3518MM X 4097MM	11'6" X 13'5"
BATH	1950MM X 2600MM	6'4" X 8'6"
EN-SUITE	1650MM X 2200MM	5'4" X 7'2"



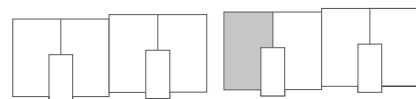
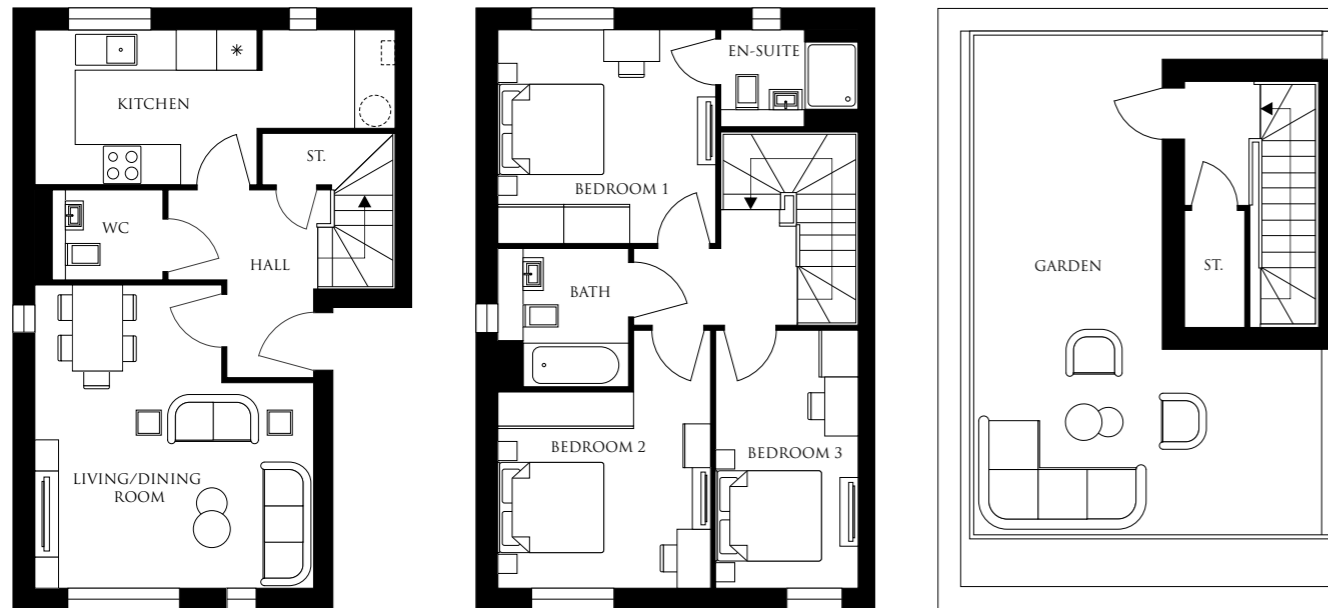
Whilst every attempt has been made to ensure the accuracy of this floor plan, measurements of doors, windows and rooms are approximate and no responsibility is taken for any error or omission. This illustration is for identification purposes only.

WEMBLEY COURT
 32
 PEAR TREE DRIVE



PLOT THIRTEEN, 3 BEDROOM APARTMENT

LIVING/DINING ROOM	4504MM X 4900MM	14'7" X 16'0"
KITCHEN	3586MM X 2491MM	11'9" X 8'2"
BEDROOM 1	3518MM X 3446MM	11'6" X 11'3"
BEDROOM 2	3428MM X 3145MM	11'2" X 10'3"
BEDROOM 3	2290MM X 4142MM	7'6" X 13'7"
BATH	2100MM X 2250MM	6'10" X 7'4"
EN-SUITE	2200MM X 1570MM	7'2" X 5'1"

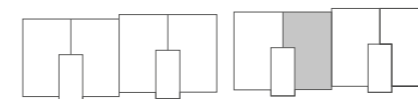
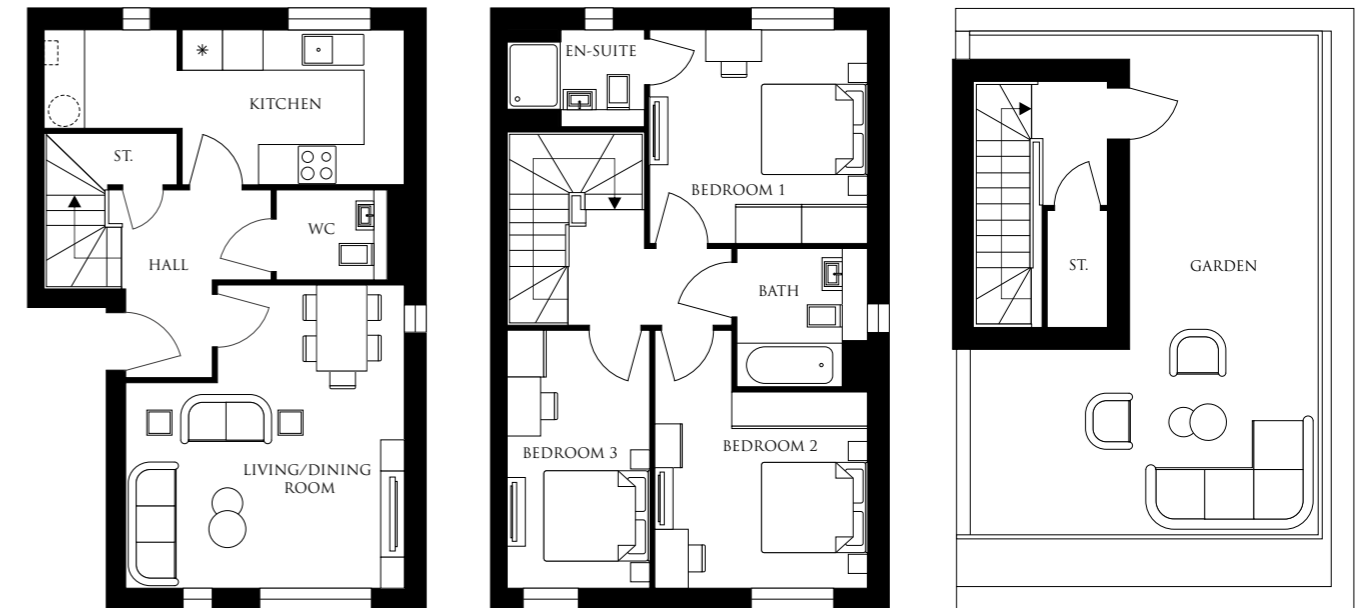


Whilst every attempt has been made to ensure the accuracy of this floor plan, measurements of doors, windows and rooms are approximate and no responsibility is taken for any error or omission. This illustration is for identification purposes only.



PLOT FOURTEEN, 3 BEDROOM APARTMENT

LIVING/DINING ROOM	4504MM X 4900MM	14'7" X 16'0"
KITCHEN	3586MM X 2491MM	11'9" X 8'2"
BEDROOM 1	3518MM X 3446MM	11'6" X 11'3"
BEDROOM 2	3428MM X 3145MM	11'2" X 10'3"
BEDROOM 3	2290MM X 4142MM	7'6" X 13'7"
BATH	2100MM X 2250MM	6'10" X 7'4"
EN-SUITE	2200MM X 1570MM	7'2" X 5'1"

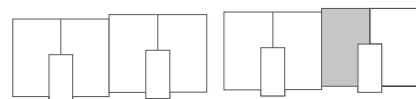
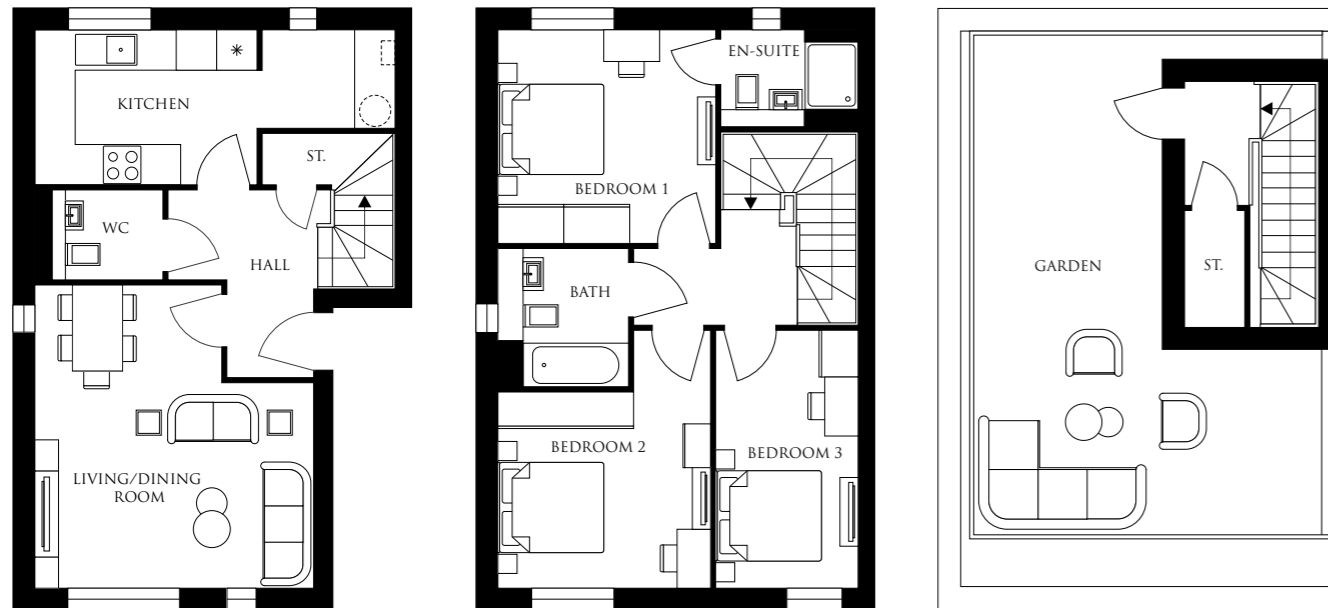


Whilst every attempt has been made to ensure the accuracy of this floor plan, measurements of doors, windows and rooms are approximate and no responsibility is taken for any error or omission. This illustration is for identification purposes only.



PLOT FIFTEEN, 3 BEDROOM APARTMENT

LIVING/DINING ROOM	4504MM X 4900MM	14'7" X 16'0"
KITCHEN	3586MM X 2491MM	11'9" X 8'2"
BEDROOM 1	3518MM X 3446MM	11'6" X 11'3"
BEDROOM 2	3428MM X 3145MM	11'2" X 10'3"
BEDROOM 3	2290MM X 4142MM	7'6" X 13'7"
BATH	2100MM X 2250MM	6'10" X 7'4"
EN-SUITE	2200MM X 1570MM	7'2" X 5'1"

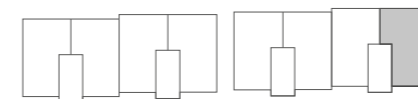
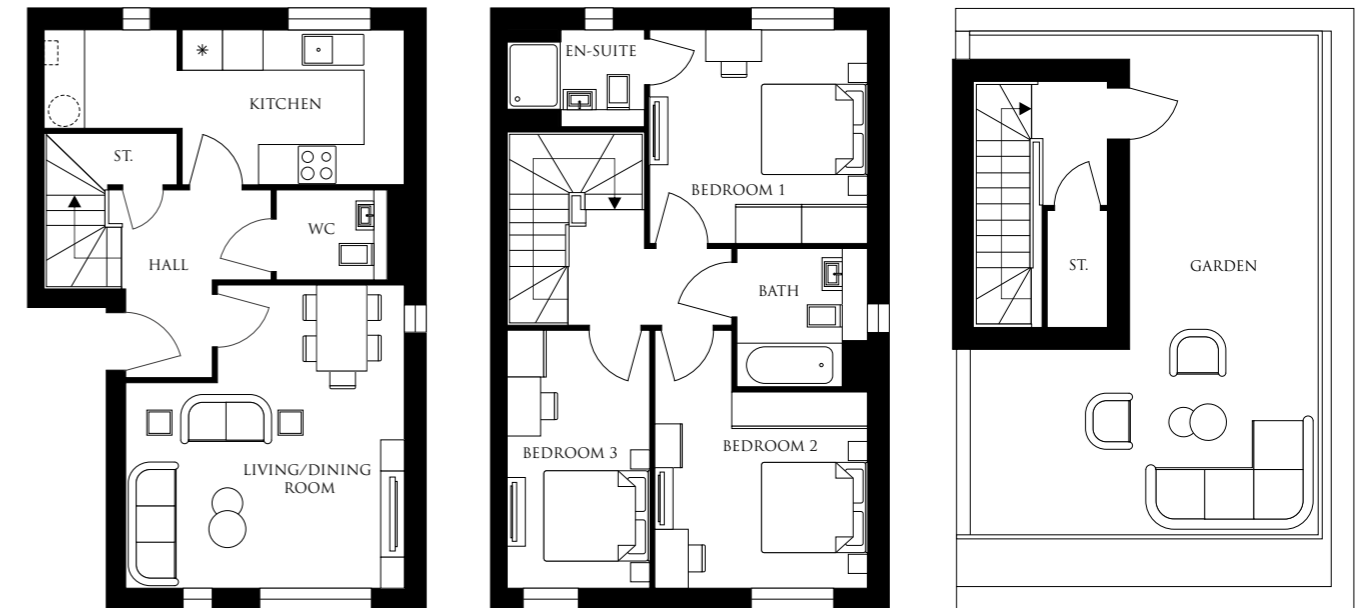


Whilst every attempt has been made to ensure the accuracy of this floor plan, measurements of doors, windows and rooms are approximate and no responsibility is taken for any error or omission. This illustration is for identification purposes only.



PLOT SIXTEEN, 3 BEDROOM APARTMENT

LIVING/DINING ROOM	4504MM X 4900MM	14'7" X 16'0"
KITCHEN	3586MM X 2491MM	11'9" X 8'2"
BEDROOM 1	3518MM X 3446MM	11'6" X 11'3"
BEDROOM 2	3428MM X 3145MM	11'2" X 10'3"
BEDROOM 3	2290MM X 4142MM	7'6" X 13'7"
BATH	2100MM X 2250MM	6'10" X 7'4"
EN-SUITE	2200MM X 1570MM	7'2" X 5'1"

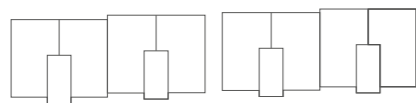
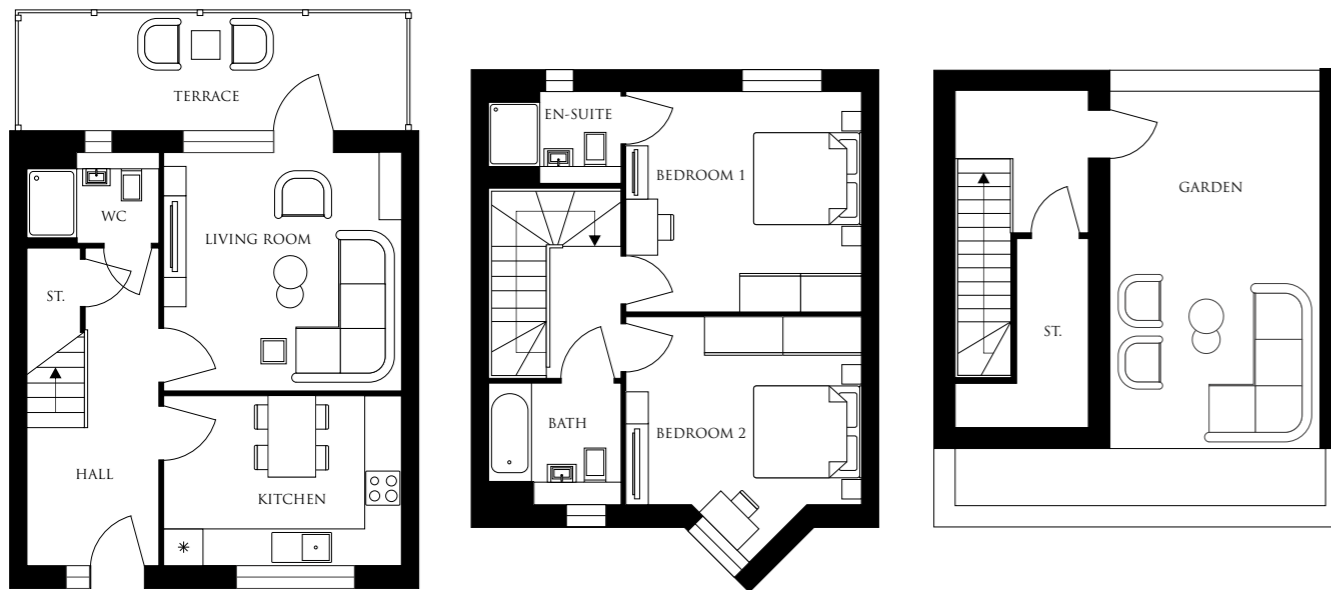


Whilst every attempt has been made to ensure the accuracy of this floor plan, measurements of doors, windows and rooms are approximate and no responsibility is taken for any error or omission. This illustration is for identification purposes only.



PLOT SEVENTEEN, 2 BEDROOM HOUSE

LIVING/DINING ROOM	4052MM X 4114MM	13'3" X 13'5"
KITCHEN	4053MM X 2910MM	13'3" X 9'6"
BEDROOM 1	4043MM X 3789MM	13'3" X 12'5"
BEDROOM 2	4052MM X 3235MM	13'3" X 10'7"
BATH	2250MM X 2100MM	7'4" X 6'10"
EN-SUITE	2200MM X 1570MM	7'4" X 5'1"

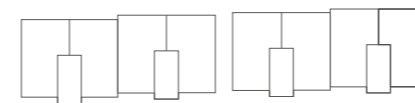
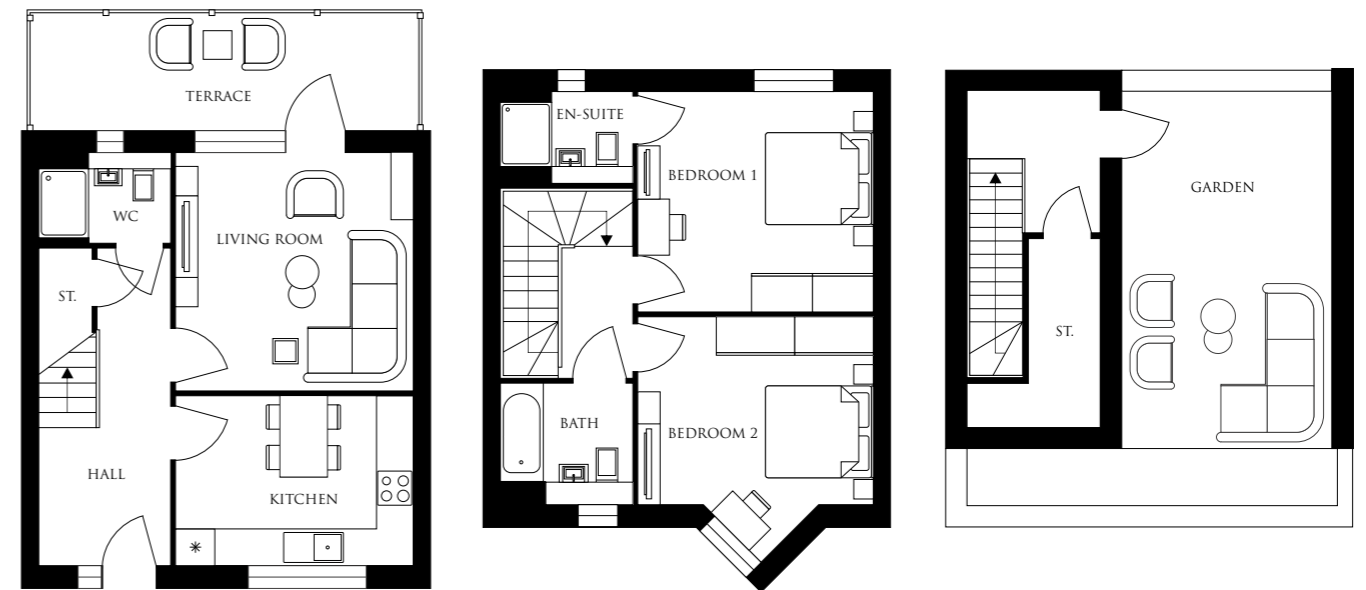


Whilst every attempt has been made to ensure the accuracy of this floor plan, measurements of doors, windows and rooms are approximate and no responsibility is taken for any error or omission. This illustration is for identification purposes only.



PLOT EIGHTEEN, 2 BEDROOM HOUSE

LIVING/DINING ROOM	4052MM X 4114MM	13'3" X 13'5"
KITCHEN	4053MM X 2910MM	13'3" X 9'6"
BEDROOM 1	4043MM X 3789MM	13'3" X 12'5"
BEDROOM 2	4052MM X 3235MM	13'3" X 10'7"
BATH	2250MM X 2100MM	7'4" X 6'10"
EN-SUITE	2200MM X 1570MM	7'4" X 5'1"

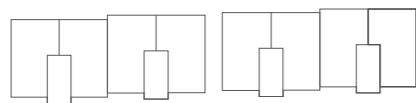
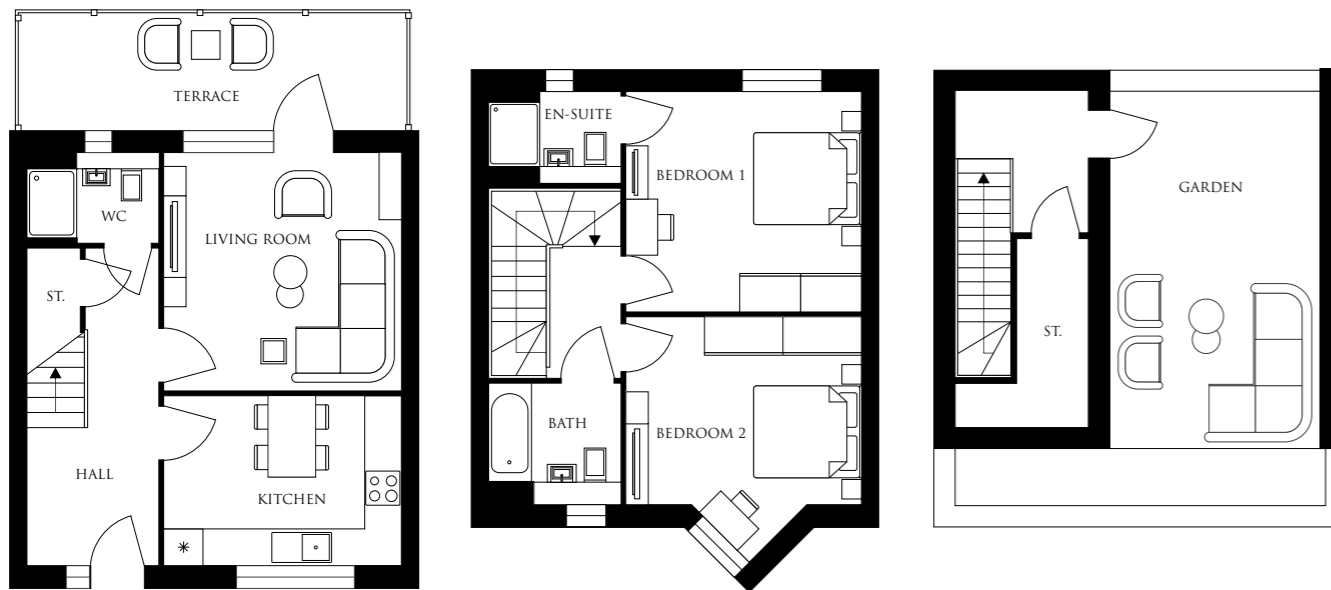


Whilst every attempt has been made to ensure the accuracy of this floor plan, measurements of doors, windows and rooms are approximate and no responsibility is taken for any error or omission. This illustration is for identification purposes only.



PLOT NINETEEN, 2 BEDROOM HOUSE

LIVING/DINING ROOM	4052MM X 4114MM	13'3" X 13'5"
KITCHEN	4053MM X 2910MM	13'3" X 9'6"
BEDROOM 1	4043MM X 3789MM	13'3" X 12'5"
BEDROOM 2	4052MM X 3235MM	13'3" X 10'7"
BATH	2250MM X 2100MM	7'4" X 6'10"
EN-SUITE	2200MM X 1570MM	7'4" X 5'1"

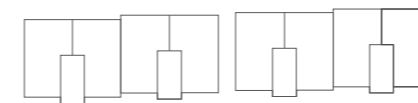
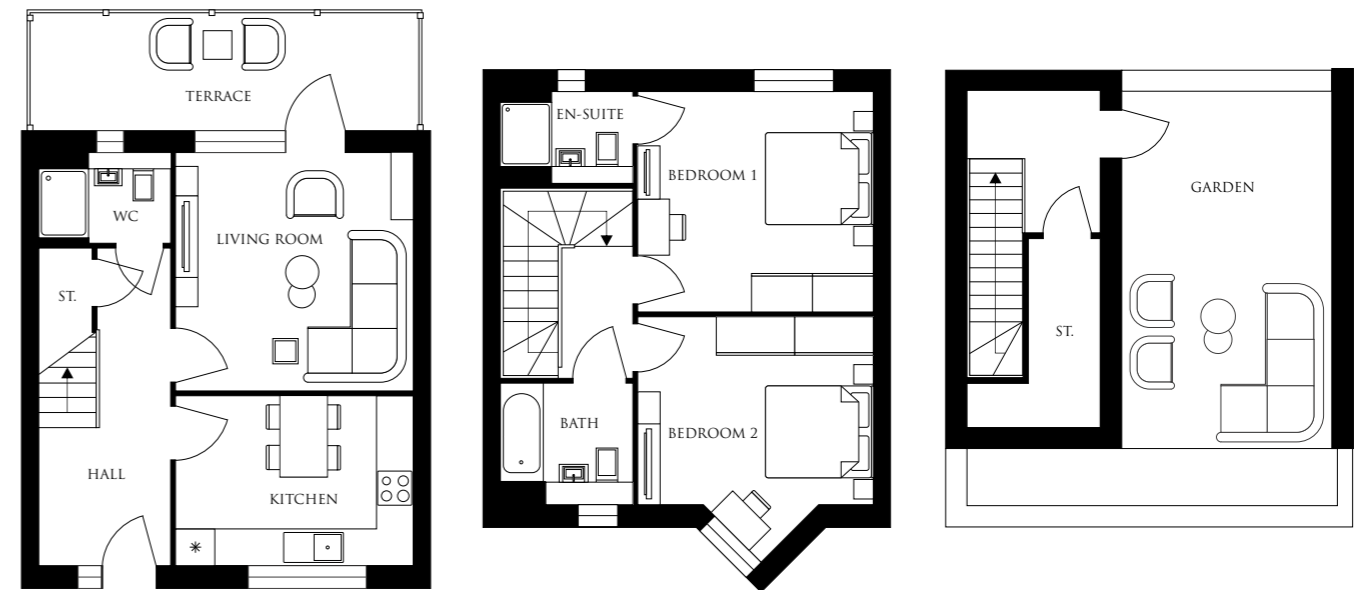


Whilst every attempt has been made to ensure the accuracy of this floor plan, measurements of doors, windows and rooms are approximate and no responsibility is taken for any error or omission. This illustration is for identification purposes only.



PLOT TWENTY, 2 BEDROOM HOUSE

LIVING/DINING ROOM	4052MM X 4114MM	13'3" X 13'5"
KITCHEN	4053MM X 2910MM	13'3" X 9'6"
BEDROOM 1	4043MM X 3789MM	13'3" X 12'5"
BEDROOM 2	4052MM X 3235MM	13'3" X 10'7"
BATH	2250MM X 2100MM	7'4" X 6'10"
EN-SUITE	2200MM X 1570MM	7'4" X 5'1"



Whilst every attempt has been made to ensure the accuracy of this floor plan, measurements of doors, windows and rooms are approximate and no responsibility is taken for any error or omission. This illustration is for identification purposes only.

WEMBLEY
 Eighteen
 40
 PEAR TREE DRIVE

SPECIFICATION

PEDESTRIAN SECURE ACCESS

- ❖ SECURITY KEYPAD TO ACCESS SPACE.
- ❖ CYCLE AND REFUSE STORES
- ❖ TREES LOW SHRUB BUSHES WITHIN PEAR TREE DRIVE
- ❖ SMOOTH PAVING

WALL & DOOR FINISHES

- ❖ WALL & CEILINGS DULEX BRILLIANT WHITE EMULSION
- ❖ WOODWORK. DULEX SATINWOOD WHITE

FITTED WARDROBES

- ❖ MATT WHITE FINISH WITH HANDLE-LESS FINGER GRIP DOORS.

INTERNAL FLOOR FINISHES.

- ❖ AMTICO HONEY OAK FLOORING IN LIVING/DINING/KITCHEN/ENTRANCE HALL.

FLOOR & WALL TILES

- ❖ SOLUS CERAMICS, WARM WHITE MIX, TRAVERTINE, RANGE ASUS IN BATHROOM/WC/ENSUITE
- ❖ CARPET: LOOP PILE-EGE, EPOCCA CLASSIC BEIGE IN BEDROOM/STAIRS

EXTERNAL FLOOR FINISH

- ❖ GRANITE COLOUR COMPOSITE DECKING BOARD ON TERRACE

BATHROOM/WC

- ❖ ROCA INSPIRA UNIK BASIN IN WHITE
- ❖ ROCA WALL WC
- ❖ ROCA BATHTUB
- ❖ BRASSWARE ROCA
- ❖ WORK TOP CONCRETE LAMINATE
- ❖ SINGLE FULL MIRRORED CABINET
- ❖ STANDARD CHROME TOWEL RAIL

KITCHEN

- ❖ CABINETS ARE HANDLELESS FINGER GRIP DOORS AND DRAWERS. COLOUR MATT WHITE.
- ❖ UNDER CABINET LED LIGHTING
- ❖ SPLASHBACK SOLUS CERAMICS
- ❖ SOLID TIMBER BEECH WORKTOP
- ❖ BRASSWARE ROCA

INTERNAL LIGHTING

- ❖ ASTRO MINIMA DEEP RECESSED ROUND LIGHT IN ENTRANCE HALL/UPPER LANDING/LIVING/DINING/KITCHEN/BEDROOMS/BATHROOM
- ❖ ASTRO PARMA UPLIGHT IN WHITE ON STAIRS

EXTERNAL LIGHTING

- ❖ ASTRO ELIS DOUBLE LED WALL LIGHT IN ENTRANCE TO THE FLATS & COMMUNAL STAIR
- ❖ ASTRO ELIS SINGLE WALL LIGHT IN REAR GARDEN AND TERRACES
- ❖ LUCANDE DARL LED LIGHT IN REAR GARDEN AND TERRACES.

ELECTRICAL FITTINGS

- ❖ STANDARD BG ELECTRONIC ELECTRICAL FITTINGS.

haart
LAND & NEW HOMES

haart.co.uk

HAART WEMBLEY OFFICE

31 Bridge Rd, Wembley
London, HA9 9AB
020 8904 1123
wembley@haart.co.uk



IMPORTANT NOTICE

haart and their clients give notice that:

- Particulars:** These particulars are not an offer or contract, nor part of one. You should not rely on statements in the particulars or by word of mouth or in writing ("information") as being factually accurate about the property, its condition or its value. The seller(s) has any authority to make any representations about the property, and accordingly any information given is entirely without responsibility on the part of the agents, seller(s) or lessor(s).
- Photos etc:** The photographs show only certain parts of the property as they appeared at the time they were taken. Areas, measurements and distances given are approximate only.
- Regulations etc:** Any reference to alterations to, or use of, any part of the property does not mean that any necessary planning, building regulations or other consent has been obtained. A buyer or lessee must find out by inspection or in other ways that these matters have been properly dealt with and that all information is correct.
- VAT:** The VAT position relating to the property may change without notice.

Particulars, photographs and plans dated: December 2019

DISCLAIMER

These details are intended as just a guide and do not form part of any specification or contract. Details of the design and the materials used, as well as any brands stated, may vary in the finished product. Please confirm the final layout and specification through your solicitor prior to contract. The dimensions are maximum and approximate and may vary based on the internal finish, dimensions are to the widest part of each room scaled down from the architect's plans. Any items ordered to size should use measurements taken from the completed property. These particulars are produced in good faith and nothing herein or verbal statements shall constitute part of any contract. No employee of haart or its agents are authorised to make or give any warranty or representation about these properties. Any images used are for illustration purposes only and do not form part of any contract or warranty.

ENERGY PERFORMANCE CERTIFICATE



Backed by
HM Government





Pear Tree
DRIVE



haart
LAND & NEW HOMES



Backed by
HM Government

020 8904 1123
wembley@haart.co.uk